

NEWS RELEASE**August 15th, 2011**

Trading Symbols:

AMM :TSX, AAU : NYSE: AMEX

www.almadenminerals.com**ALMADEN EXPANDS WIDTH OF IXTACA ZONE, CUTS 25.3 M OF 2.26 G/T AU**

Almaden Minerals Ltd. ("Almaden" or "the Company"; AMM: TSX; AAU: NYSE AMEX) is pleased to announce results from drilling within the currently defined Ixtaca Zone with holes TU-11-37 through TU-11-40 and CA-11-02 from the Caleva Zone to the north. Holes TU-11-39 and TU-11-40 extend the width of the known Ixtaca Zone to the northwest. Hole TU-11-38 shows the Ixtaca zone extending towards surface from where it was previously tested on this section in hole TU-10-3. At the Caleva zone, hole CA-11-02 intersected mineralisation at the top of the hole and further drilling is planned to follow this up.

Highlights from the current group of assays include the following intercepts:

Hole TU-11-40:

155.00 meters @ 0.60 g/t gold and 3.9 g/t silver (0.7 g/t gold equivalent)

including 35.09 meters @ 1.75 g/t gold and 4.5 g/t silver (1.8 g/t gold equivalent)

and 25.30 meters @ 2.26 g/t gold and 5.5 g/t silver (2.4 g/t gold equivalent)

and 1.57 meters @ 18.20 g/t gold and 22.2 g/t silver (18.6 g/t gold equivalent)

and 2.25 meters @ 3.87 g/t gold and 23.8 g/t silver (4.3 g/t gold equivalent)

Hole TU-11-39:

154.65 meters @ 0.48 g/t gold and 37.7 g/t silver (1.2 g/t gold equivalent)

including 33.60 meters @ 0.90 g/t gold and 87.4 g/t silver (2.6 g/t gold equivalent)

and 1.20 meters @ 7.29 g/t gold and 487.2 g/t silver (17.0 g/t gold equivalent)

Hole TU-11-38:

90.83 meters @ 0.49 g/t gold and 22.6 g/t silver (0.9 g/t gold equivalent)

including 9.13 meters @ 3.55 g/t gold and 90.3 g/t silver (5.4 g/t gold equivalent)

Hole TU-11-37:

12.44 meters @ 0.52 g/t gold and 1.8 g/t silver (0.6 g/t gold equivalent)

Hole CA-11-02:

27.00 meters of 0.21 g/t gold and 39.7 g/t silver (1.0 g/t gold equivalent)

J.D. Poliquin, Chairman of Almaden commented, "These new holes continue to show that the Ixtaca zone is a robust and wide system of veining. Drilling to date on the Ixtaca zone also shows good continuity of mineralisation in both horizontal and vertical dimensions. We are very pleased with these new results which further expand the known extent of the Ixtaca zone. We now have three drills on site." The Company anticipates drilling operations will continue throughout 2011.

Below is a plan map, relevant sections and table of significant intervals which will be posted to the Company's website (www.almadenminerals.com) along with complete tables of assays.

About the Ixtaca Property

The 100% owned Ixtaca zone is a blind discovery made by the Company in 2010. The zone of veining is thought to have a north-easterly trend. Holes to date suggest that the zone is sub vertical with local variations. This interpretation suggests that true widths are approximately 60% of intersected widths. The drilling completed

Hole	From (m)	To (m)	Interval (m)	Au (g/t)	Ag (g/t)	AuEq (g/t)	AgEq (g/t)
TU-11-37	136.22	148.66	12.44	0.52	1.8	0.6	28
TU-11-38	64.10	225.47	161.37	0.32	18.2	0.7	34
including	64.10	154.93	90.83	0.49	22.6	0.9	47
and	64.10	99.20	35.10	1.14	46.0	2.1	103
and	79.92	89.05	9.13	3.55	90.3	5.4	268
and	79.92	83.05	3.13	8.33	98.2	10.3	515
TU-11-39	39.30	154.65	115.35	0.48	37.7	1.2	62
including	39.30	48.16	8.86	1.31	33.0	2.0	98
and	111.20	144.80	33.60	0.90	87.4	2.6	132
and	116.20	135.80	19.60	1.05	101.8	3.1	154
and	127.64	135.80	8.16	1.84	138.1	4.6	230
and	132.90	135.80	2.90	4.22	261.3	9.4	472
and	134.60	135.80	1.20	7.29	487.2	17.0	852
TU-11-40	42.00	197.00	155.00	0.60	3.9	0.7	34
including	42.00	135.20	93.20	0.29	4.2	0.4	19
and	77.04	108.80	31.76	0.43	7.1	0.6	29
and	77.04	197.00	119.96	0.71	4.7	0.8	40
and	151.36	186.45	35.09	1.75	4.5	1.8	92
and	159.50	184.80	25.30	2.26	5.5	2.4	118
and	171.56	173.13	1.57	18.20	22.2	18.6	932
and	182.55	184.80	2.25	3.87	23.8	4.3	217
CA-11-02	100.00	127.00	27.00	0.21	39.7	1.0	50
and	194.00	199.76	5.76	0.22	14.8	0.5	26

to date has traced mineralisation over 750 meters along this northeast trend. Based upon observations at surface and of core as drilling progresses, there seems to be a variety of veinlet orientations within the vein zone. Registered professional geologist Jim Lunbeck, a qualified person ("QP") under the meaning of NI 43-101, is the QP and project manager of Almaden's 2011 Ixtaca program and reviewed the technical information in this news release. The analyses reported were carried out at ALS Chemex Laboratories of North Vancouver using industry standard analytical techniques. For gold, samples are first analysed by fire assay and atomic absorption spectroscopy ("AAS"). Samples that return values greater than 10 g/t gold using this technique are then re-analysed by fire assay but with a gravimetric finish. Silver is first analysed by Inductively Coupled Plasma - Atomic Emission Spectroscopy ("ICP-AES"). Samples that return values greater than 100 g/t silver by ICP-AES are then re-analysed by HF-HNO₃-HClO₄ digestion with HCL leach and ICP-AES finish. Of these samples those that return silver values greater than 1,500 g/t are further analysed by fire assay with a gravimetric finish. Blanks, field duplicates and certified standards were inserted into the sample stream as part of Almaden's quality assurance and control program which complies with National Instrument 43-101 requirements. Gold equivalent ("AuEq" or "Gold Eq.") and silver equivalent ("AgEq" or "Silver Eq.") values were calculated using silver to gold ratios of 50 to 1. The ratio of 50 to 1 was used for the sake of consistency with past news releases. Intervals that returned assays below detection were assigned zero values. Metallurgical recoveries and net smelter returns are assumed to be 100% for these calculations.

About Almaden

Almaden is a well-financed (no debt, approximately \$C25 MM in working capital) mineral exploration company working in North America. The company has assembled mineral exploration projects, including Tuligtic, through its grass roots exploration efforts. While the properties are largely at early stages of development they represent exciting opportunities for the discovery of significant gold, silver and copper deposits as evidenced at Ixtaca. Currently six projects (Caldera, Caballo Blanco, Tropico, Matehuapil, Merit and Yago), are optioned to separate third parties who each have the right to acquire an interest in their respective project from Almaden through making certain payments and exploration expenditures. Four further projects are held in joint ventures. Almaden also holds a 2% NSR interest in 11 projects. Almaden's business model is to find and acquire mineral properties

and develop them by seeking option agreements with others who can acquire an interest in a project by making payments and exploration expenditures. Through this means the company has been able to expose its shareholders to discovery and capital gain without the funding and consequent share dilution that would be required if the company were to have developed these projects without a partner. The company intends to expand this business model, described by some as prospect generation, by more aggressively exploring several of its projects including the Ixtaca Zone.

On Behalf of the Board of Directors

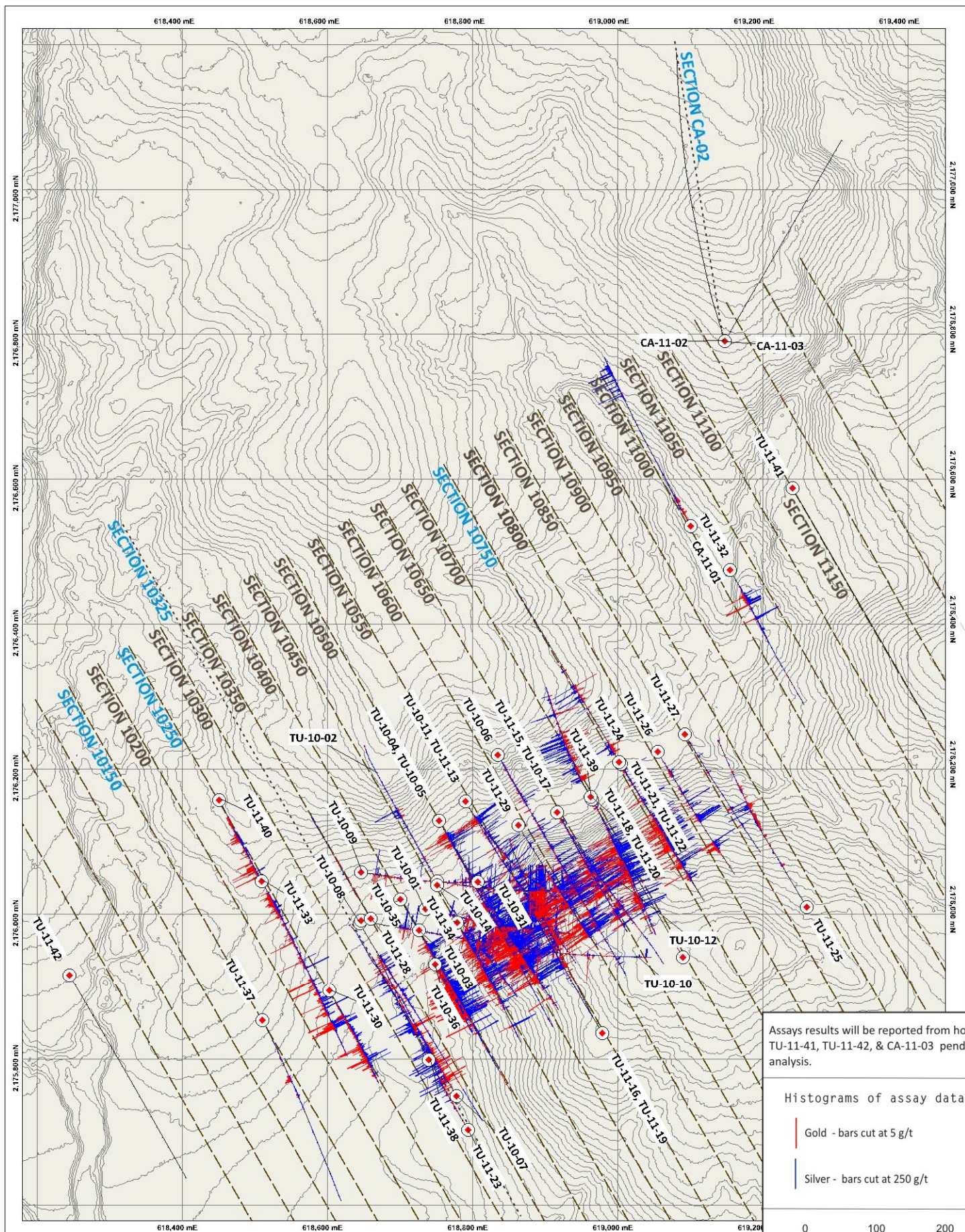
"Morgan Poliquin"

Morgan J. Poliquin, Ph.D., P.Eng.

President, CEO and Director

Almaden Minerals Ltd.

Neither the Toronto Stock Exchange (TSX) nor the NYSE AMEX have reviewed or accepted responsibility for the adequacy or accuracy of the contents of this news release which has been prepared by management.. Except for the statements of historical fact contained herein, certain information presented constitutes "forward-looking statements" within the meaning of the United States Private Securities Litigation Reform Act of 1995 and Canadian securities laws. Such forward-looking statements, including but not limited to, those with respect to potential expansion of mineralization, potential size of mineralized zone, and size and timing of exploration and development programs, estimated project capital and other project costs and the timing of submission and receipt and availability of regulatory approvals involve known and unknown risks, uncertainties and other factors which may cause the actual results, performance or achievement of Almaden to be materially different from any future results, performance or achievements expressed or implied by such forward-looking statements. Such factors include, among others, risks related to international operations and joint ventures, the actual results of current exploration activities, conclusions of economic evaluations, uncertainty in the estimation of mineral resources, changes in project parameters as plans continue to be refined, environmental risks and hazards, increased infrastructure and/or operating costs, labour and employment matters, and government regulation and permitting requirements as well as those factors discussed in the section entitled "Risk Factors" in Almaden's Annual Information form and Almaden's latest Form 20-F on file with the United States Securities and Exchange Commission in Washington, D.C. Although Almaden has attempted to identify important factors that could cause actual results to differ materially, there may be other factors that cause results not to be as anticipated, estimated or intended. There can be no assurance that such statements will prove to be accurate as actual results and future events could differ materially from those anticipated in such statements. Almaden disclaims any intention or obligation to update or revise any forward-looking statements, whether as a result of new information, future events or otherwise, other than as required pursuant to applicable securities laws. Accordingly, readers should not place undue reliance on forward-looking statements.

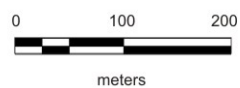


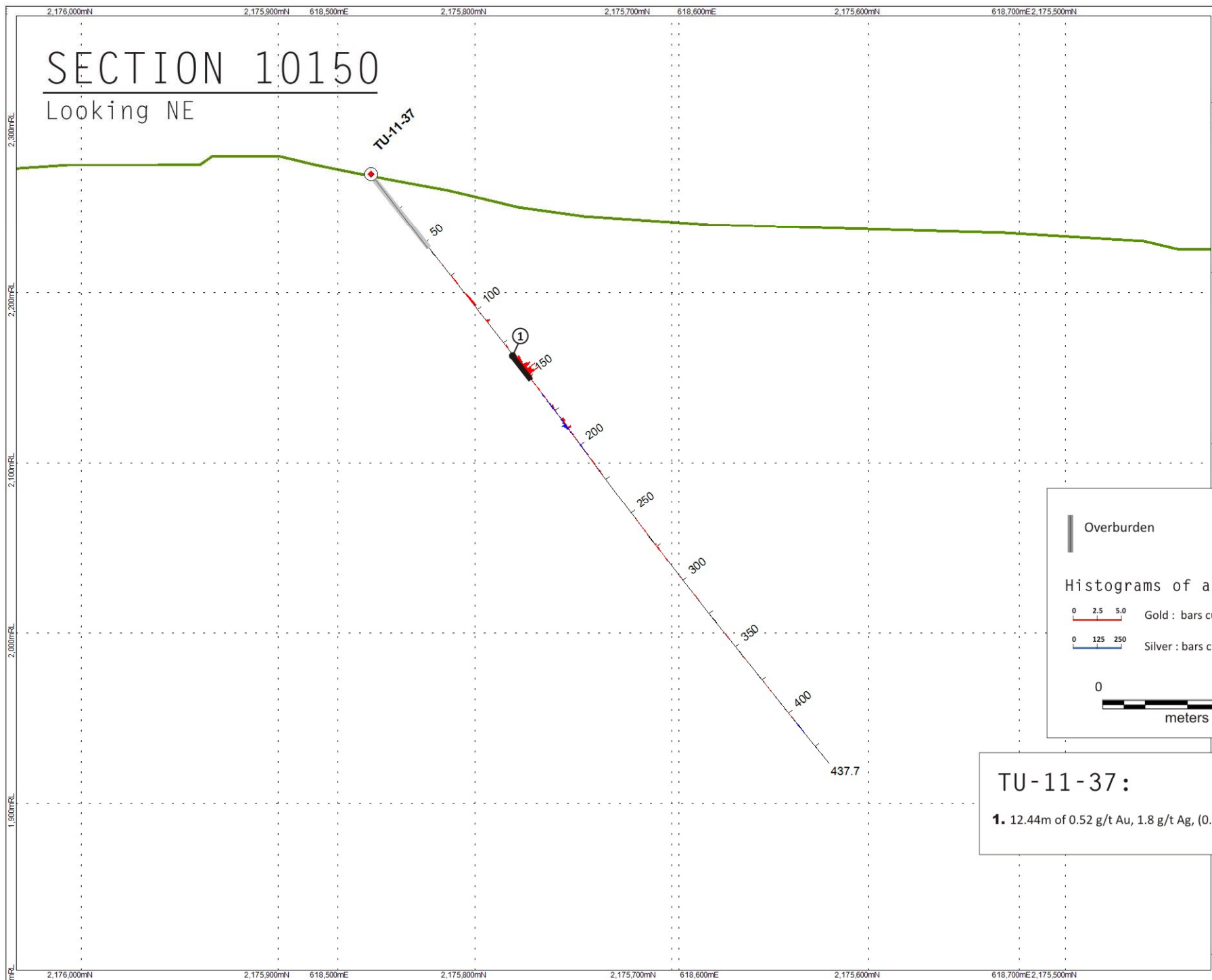
Assays results will be reported from holes
TU-11-41, TU-11-42, & CA-11-03 pending
analysis.

Histograms of assay data

Gold - bars cut at 5 g/t

Silver - bars cut at 250 g/t





TU-11-37:

1. 12.44m of 0.52 g/t Au, 1.8 g/t Ag, (0.6 g/t AuEq)

SECTION 10:250

Looking NE

TU-11-40:

- a. 119.96m of 0.71 g/t Au, 4.7 g/t Ag, (0.8 g/t AuEq)
- b. 35.09m of 1.75 g/t Au, 4.5 g/t Ag, (1.8 g/t AuEq)
- c. 1.57m of 18.20 g/t Au, 22.2 g/t Ag, (18.6 g/t AuEq)
- d. 2.25m of 3.87 g/t Au, 23.8 g/t Ag, (4.3 g/t AuEq)

Previously Reported interval highlights.
Please see Almaden's Ixtaca Drill Program overview for full results.

TU-11-30:

- 1. 152.00m of 0.91 g/t Au, 13.6 g/t Ag, (1.2 g/t AuEq)
- 2. 8.00m of 9.38 g/t Au, 3.4 g/t Ag, (9.4 g/t AuEq)
- 3. 1.00m of 66.80 g/t Au, 18.4 g/t Ag, (67.2 g/t AuEq)
- 4. 53.44m of 0.82 g/t Au, 22.9 g/t Ag, (1.3 g/t AuEq)
- 5. 14.08m of 1.14 g/t Au, 48.2 g/t Ag, (2.1 g/t AuEq)
- 6. 3.00m of 3.31 g/t Au, 116.9 g/t Ag, (5.6 g/t AuEq)

TU-11-33:

- A. 323.25m of 0.44 g/t Au, 14.5 g/t Ag, (0.7 g/t AuEq)
- B. 78.75m of 0.53 g/t Au, 9.8 g/t Ag, (0.7 g/t AuEq)
- C. 23.65m of 0.46 g/t Au, 7.5 g/t Ag, (0.6 g/t AuEq)
- D. 34.27m of 0.39 g/t Au, 12.1 g/t Ag, (0.6 g/t AuEq)
- E. 85.40m of 0.57 g/t Au, 17.6 g/t Ag, (0.9 g/t AuEq)
- F. 15.85m of 1.23 g/t Au, 99.9 g/t Ag, (3.2 g/t AuEq)
- G. 2.85 m of 1.34 g/t Au, 7.4 g/t Ag, (1.5 g/t AuEq)



Interpreted
vein zones



Overburden

Histograms of assay data

0 2.5 5.0

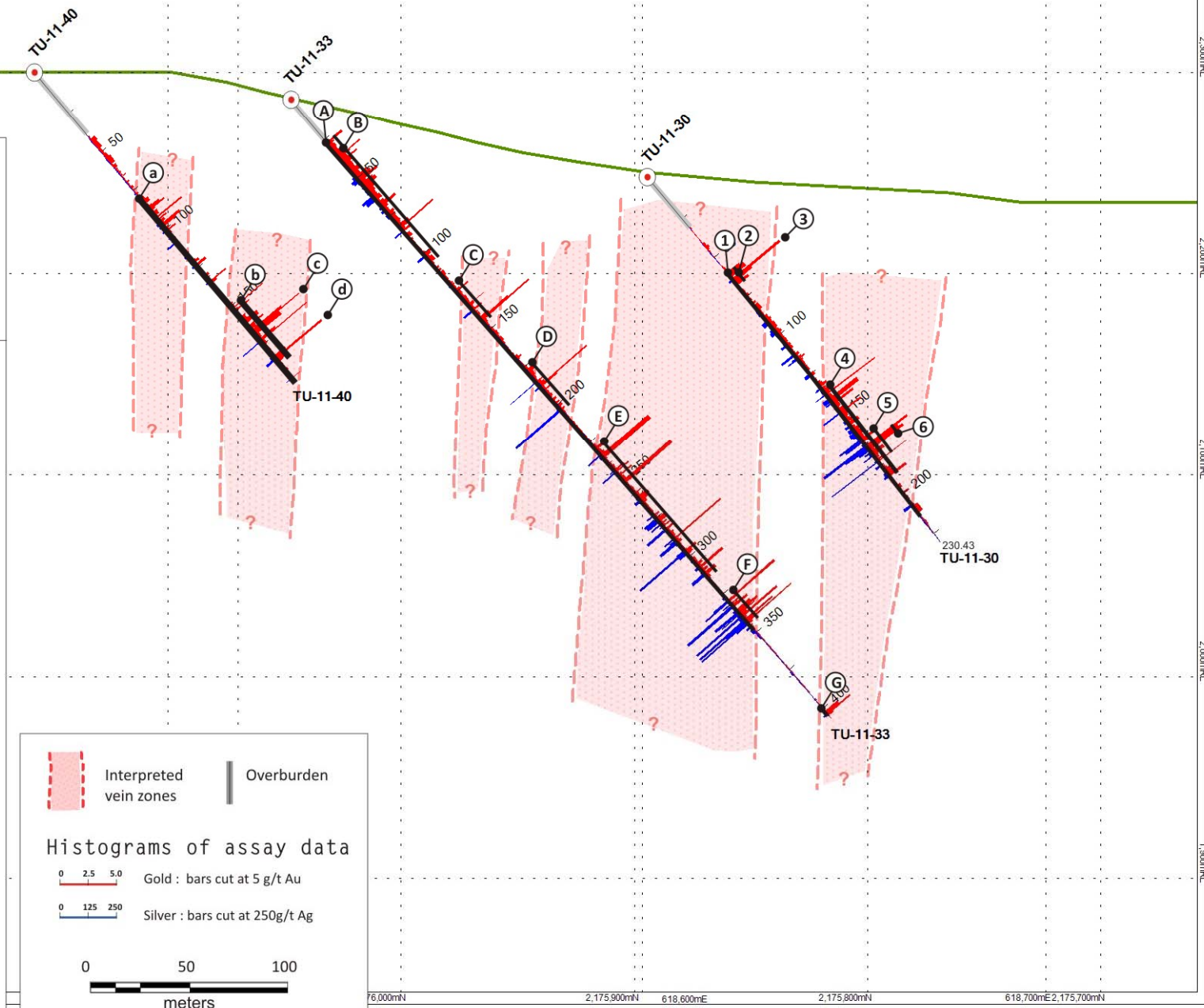
Gold : bars cut at 5 g/t Au

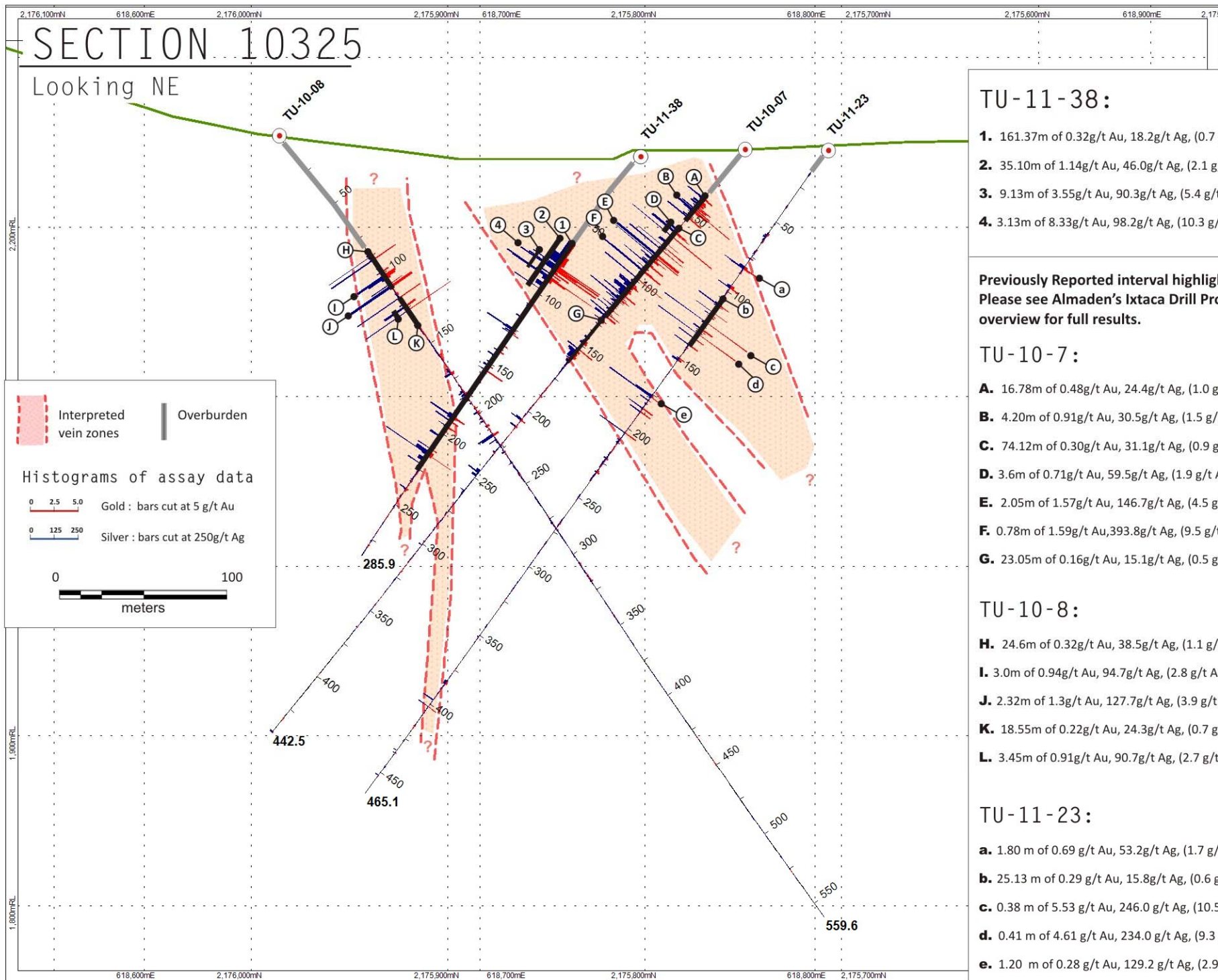
0 125 250

Silver : bars cut at 250g/t Ag

0 50 100

meters





TU-11-38:

1. 161.37m of 0.32g/t Au, 18.2g/t Ag, (0.7 g/t AuEq)
2. 35.10m of 1.14g/t Au, 46.0g/t Ag, (2.1 g/t AuEq)
3. 9.13m of 3.55g/t Au, 90.3g/t Ag, (5.4 g/t AuEq)
4. 3.13m of 8.33g/t Au, 98.2g/t Ag, (10.3 g/t AuEq)

Previously Reported interval highlights.
Please see Almaden's Ixtaca Drill Program overview for full results.

TU-10-7:

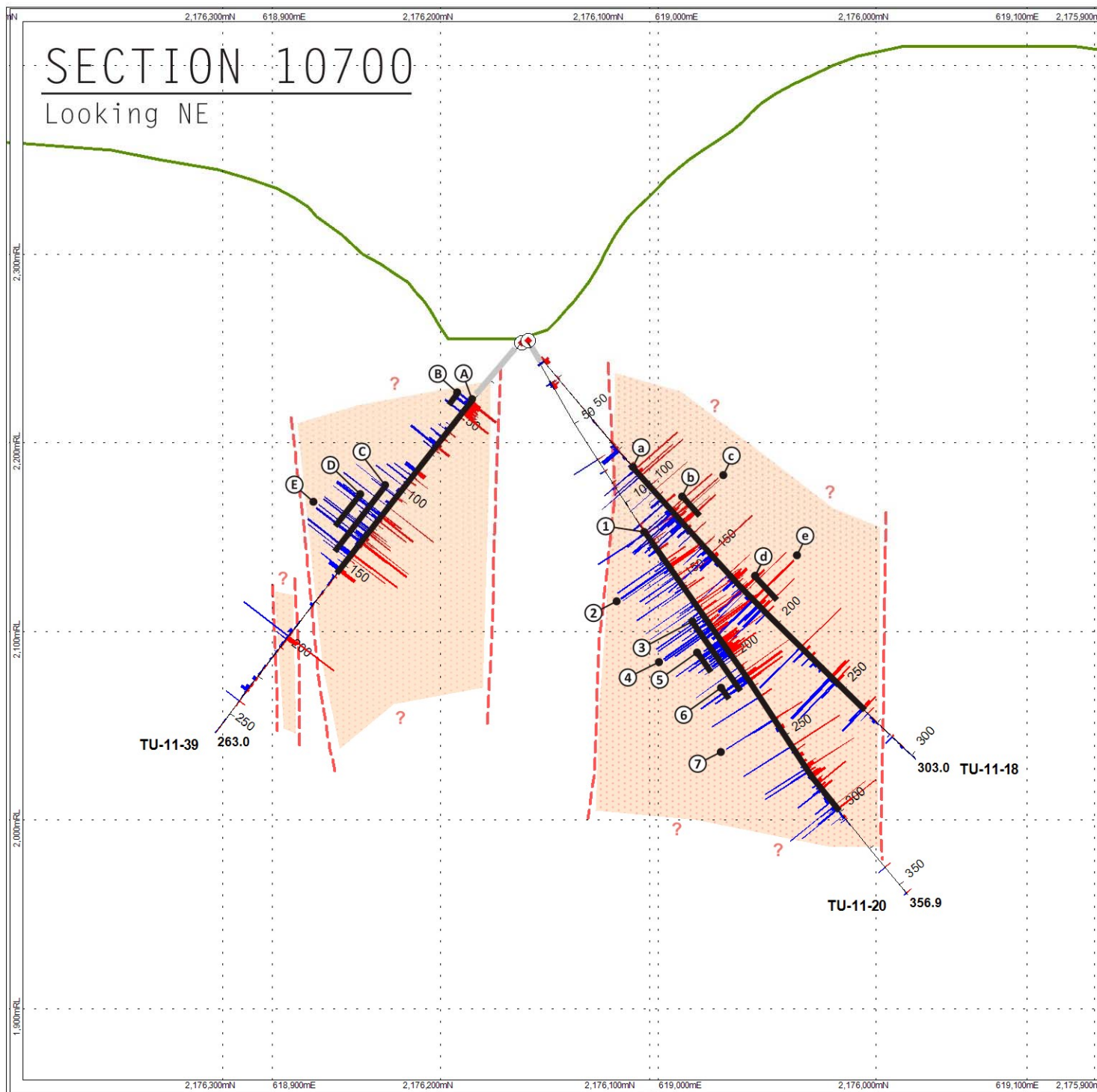
- A. 16.78m of 0.48g/t Au, 24.4g/t Ag, (1.0 g/t AuEq)
- B. 4.20m of 0.91g/t Au, 30.5g/t Ag, (1.5 g/t AuEq)
- C. 74.12m of 0.30g/t Au, 31.1g/t Ag, (0.9 g/t AuEq)
- D. 3.6m of 0.71g/t Au, 59.5g/t Ag, (1.9 g/t AuEq)
- E. 2.05m of 1.57g/t Au, 146.7g/t Ag, (4.5 g/t AuEq)
- F. 0.78m of 1.59g/t Au, 393.8g/t Ag, (9.5 g/t AuEq)
- G. 23.05m of 0.16g/t Au, 15.1g/t Ag, (0.5 g/t AuEq)

TU-10-8:

- H. 24.6m of 0.32g/t Au, 38.5g/t Ag, (1.1 g/t AuEq)
- I. 3.0m of 0.94g/t Au, 94.7g/t Ag, (2.8 g/t AuEq)
- J. 2.32m of 1.3g/t Au, 127.7g/t Ag, (3.9 g/t AuEq)
- K. 18.55m of 0.22g/t Au, 24.3g/t Ag, (0.7 g/t AuEq)
- L. 3.45m of 0.91g/t Au, 90.7g/t Ag, (2.7 g/t AuEq)

TU-11-23:

- a. 1.80 m of 0.69 g/t Au, 53.2g/t Ag, (1.7 g/t AuEq)
- b. 25.13 m of 0.29 g/t Au, 15.8g/t Ag, (0.6 g/t AuEq)
- c. 0.38 m of 5.53 g/t Au, 246.0 g/t Ag, (10.5 g/t AuEq)
- d. 0.41 m of 4.61 g/t Au, 234.0 g/t Ag, (9.3 g/t AuEq)
- e. 1.20 m of 0.28 g/t Au, 129.2 g/t Ag, (2.9 g/t AuEq)



TU-11-39:

- A.** 115.65m of 0.48 g/t Au, 37.7 g/t Ag, (1.2 g/t AuEq)
- B.** 8.86m of 1.31 g/t Au, 33.0 g/t Ag, (2.0 g/t AuEq)
- C.** 33.60m of 0.90 g/t Au, 87.4 g/t Ag, (2.6 g/t AuEq)
- D.** 19.60m of 1.05 g/t Au, 101.8 g/t Ag, (3.1 g/t AuEq)
- E.** 1.20m of 7.29 g/t Au, 487.2 g/t Ag, (17.0 g/t AuEq)

Previously Reported interval highlights.
Please see Almaden's Ixtaca Drill Program overview for full results.

TU-11-18:

- a.** 179.87m of 0.40 g/t Au, 32.6 g/t Ag, (1.1 g/t AuEq)
- b.** 10.77m of 1.65 g/t Au, 114.6 g/t Ag, (3.9 g/t AuEq)
- c.** 1.60m of 4.19 g/t Au, 336.4 g/t Ag, (10.9 g/t AuEq)
- d.** 15.67m of 1.09 g/t Au, 66.1 g/t Ag, (2.4 g/t AuEq)
- e.** 0.97m of 6.65 g/t Au, 348.5 g/t Ag, (13.6 g/t AuEq)

TU-11-20:

- 1.** 179.20m of 0.55 g/t Au, 35.9 g/t Ag, (1.3 g/t AuEq)
- 2.** 2.10m of 3.20 g/t Au, 302.8 g/t Ag, (9.3 g/t AuEq)
- 3.** 42.21m of 1.05 g/t Au, 62.5 g/t Ag, (2.3 g/t AuEq)
- 4.** 2.89m of 2.99 g/t Au, 276.7 g/t Ag, (8.5 g/t AuEq)
- 5.** 11.06m of 1.38 g/t Au, 83.6 g/t Ag, (3.0 g/t AuEq)
- 6.** 4.36m of 1.63 g/t Au, 103.9 g/t Ag, (3.7 g/t AuEq)
- 7.** 0.93m of 1.53 g/t Au, 421.8 g/t Ag, (10.0 g/t AuEq)

